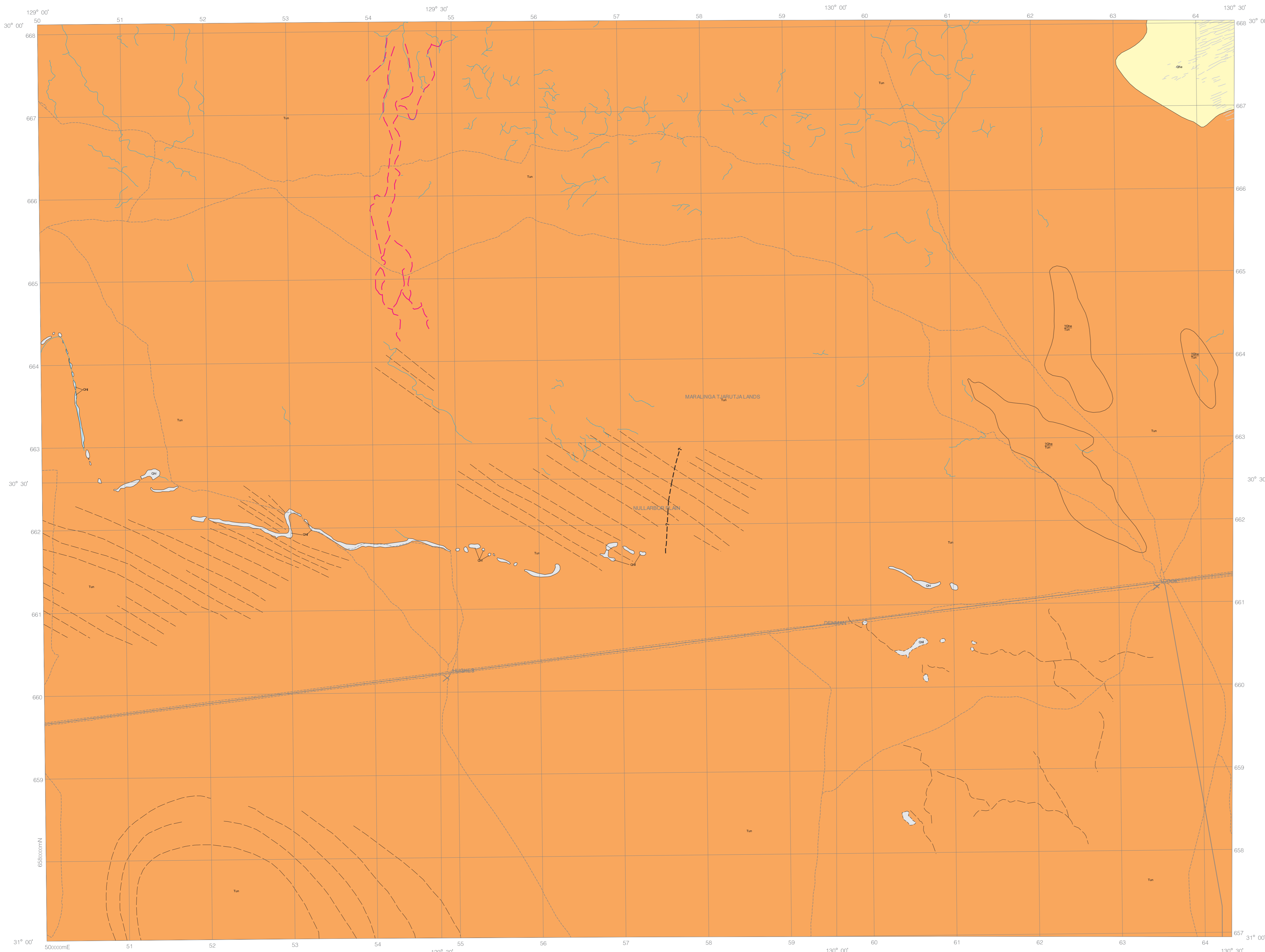


AUSTRALIA 1:250 000

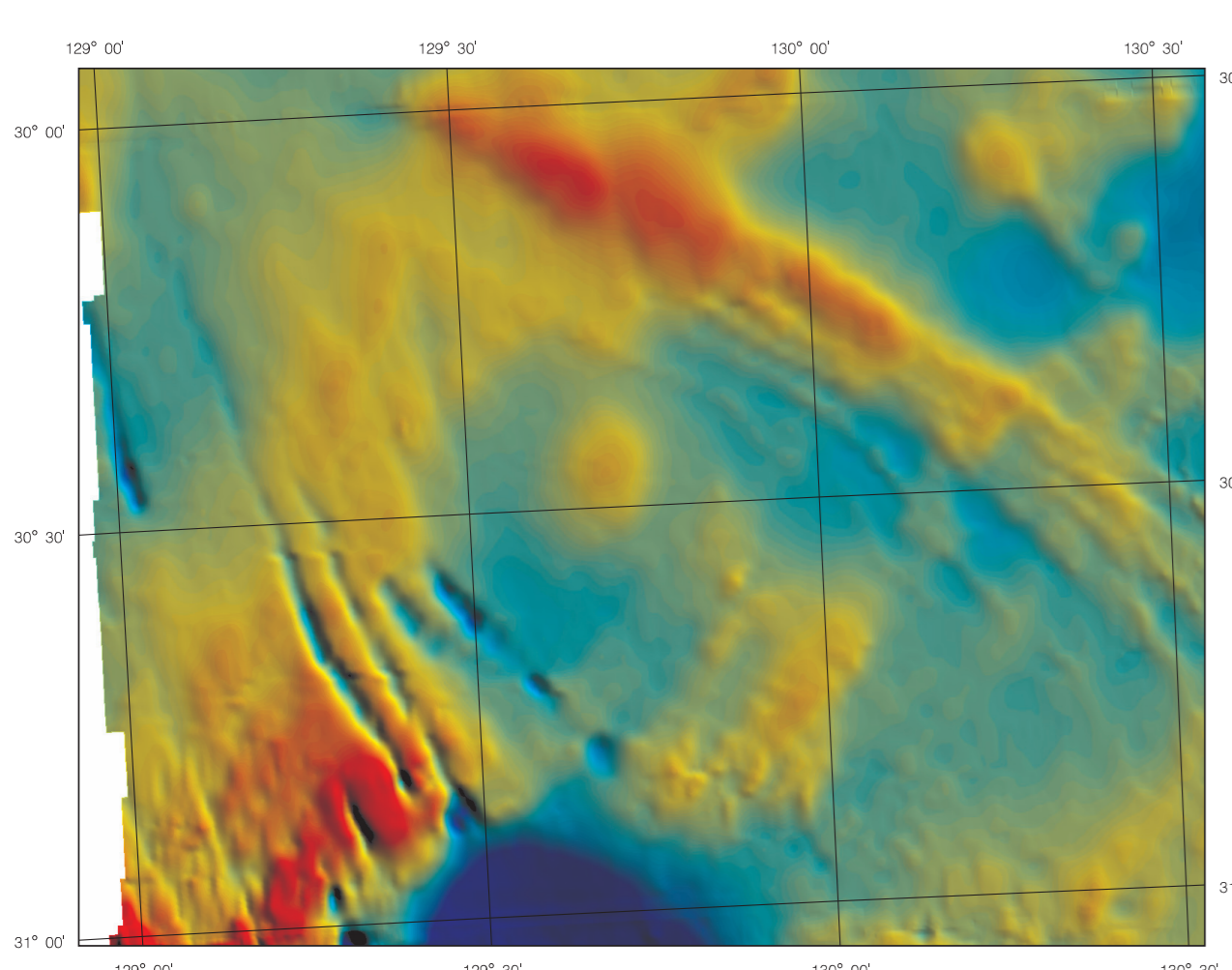
S.A. GEOLOGICAL ATLAS SERIES SHEET SH 52-11

REFERENCE

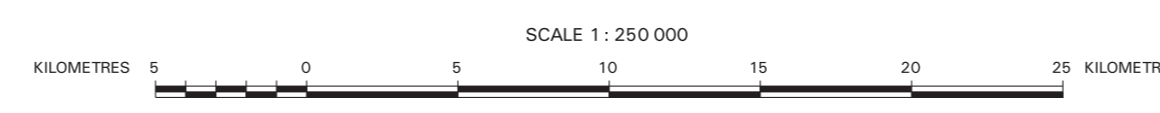
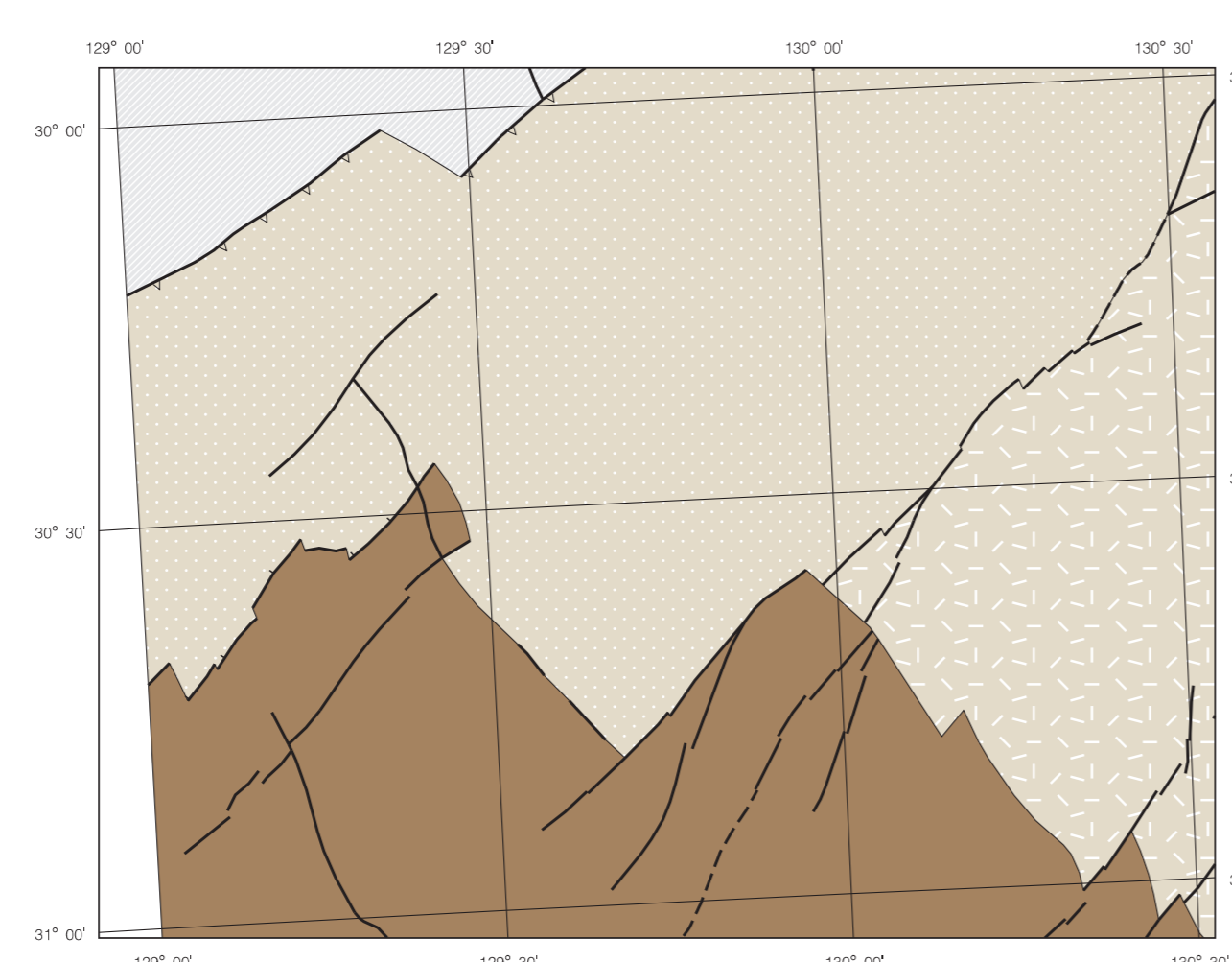


- HOLOCENE**
- Qhe** Undifferentiated Holocene aeolian sediments
 - Qh** Undifferentiated Holocene lacustrine/peyia sediments
- Eocene-Miocene**
- Tun** NULLARBOR LIMESTONE; Limestone, bioblastic, micritic; Subtropical, platform, above fair weather wave-base.

TOTAL MAGNETIC INTENSITY IMAGE



SOLID GEOLOGY INTERPRETATION



Any person purchasing this map may reproduce it for their own use or that of their staff, but not for any other purpose except with the written permission of the Chief Executive, Department for Manufacturing, Industry, Trade, Resources and Energy, GPO Box 1286, Adelaide, South Australia, 5001.

CROWN COPYRIGHT RESERVED
Department for Manufacturing, Industry, Trade, Resources and Energy, 2012

Topographic detail based on TOPO-250K GEODATA (source scale 1:250 000) supplied by Geoscience Australia - National Mapping Division, ACT. The relationship between this data and PRISA data is not guaranteed.

Computer generated from SA_GEOLOGY database (Digital data available upon request) Current version: 01/11

Product of PRISA Spatial Information Services. Published by, and with the authority of, the Department for Manufacturing, Industry, Trade, Resources and Energy. Grey numbered lines indicate the 10000 metre Map Grid Transverse Mercator Projection, Geocentric Datum Australia, 1994.

Preliminary Geological Map prepared by photo interpretation of aerial photographs.

T. Baker, Ph.D., Manager, Geological Survey Branch.

INDEX TO 1:100 000 SHEETS

Koreha 4757	Coorga 4837	Sahp 4937
Burnburn 4756	Burdulla 4836	Cook 4836

INDEX TO ADJOINING 1:250 000 SHEETS

MASON	WYOLA	MAURICE
FORREST	COOK	COLDEA
EUCLA	COOMANNA	NULLARBOR



DIGITAL EDITION
SUBJECT TO AMENDMENT
See published printed map for further information

Geological boundaries displayed on this map have been derived from geological interpretation and are not intended to be used for navigational purposes. Not all structures displayed in the legend are represented on this particular map.

Digital edition compiled by M. C. Fardough.

Copies of this map can be obtained from the Department for Manufacturing, Industry, Trade, Resources and Energy, Adelaide.

May 22, 2012

- | | | |
|---|------------------------------------|--------------------------|
| GEOLOGICAL BOUNDARY | CULTURAL FEATURES | MINING |
| DESIGNED ———— | HIGHWAY ———— | DEPOSIT ○ |
| INFERRED - - - - - | SECONDARY ROAD ———— | ALLUVIAL WORKING □ |
| FAULT ———— | MINOR ROAD ———— | MINI □ |
| DESIGNED ———— | VEHICLE TRACK ———— | OCURRENCE * |
| INFERRED - - - - - | RAILWAY ———— | PIT □ |
| SHEAR ZONE ———— | DISSID RAILWAY ———— | PROSPECT △ |
| BEDDING ———— | FENCE ———— | QUARRY □ |
| TRENCH ———— | POWER TRANSMISSION LINE ———— | TREATMENT PLANT ● |
| RELIEF FEATURES | PIPELINE ———— | FIELD □ |
| SHADOWN ———— | BUILDING ———— | |
| IDENTIFIED POINT * | YARD ———— | |
| SPOT HEIGHT + | LANDING GROUND ———— | |
| TOPOGRAPHIC CONTOUR ———— | TOWN OR LOCALITY ———— | |
| TOPOGRAPHIC DEPRESSION (PALAEDRAINAGE) ———— | | |
| HYDROGRAPHIC FEATURES | | |
| GEOLOGICAL LAKE ———— | | |
-
- | | | |
|--------------------------------|---|--------------------|
| MYLONITIC FOLIATION | STRUCTURAL FEATURES | COMMODITIES |
| INCLUDED ———— | VOLCANIC FLOW BANDING ———— | |
| VERTICAL ———— | INDICED ———— | |
| METAMORPHIC KLEINING | TECTONIC FOLIATION | |
| INCLUDED ———— | INCLUDED ———— | |
| VERTICAL ———— | VERTICAL ———— | |
| HORIZONTAL SEDIMENTARY BEDDING | FOLDS | |
| INCLUDED ———— | S-STYLE GENERAL FOLD AXIS (S-FORM) ———— | |
| HORIZONTAL ———— | Z-STYLE GENERAL FOLD AXIS (Z-FORM) ———— | |
| VERTICAL ———— | FOLDS | |
| JOINT ———— | S-STYLE STRATIGRAPHIC FOLD AXIS ———— | |
| INCLUDED ———— | Z-STYLE STRATIGRAPHIC FOLD AXIS ———— | |
| SLATY CLEAVAGE | SCHISTOSITY | |
| INCLUDED ———— | INCLUDED ———— | |
| VERTICAL ———— | VERTICAL ———— | |
| COLUMNAR JOINT AXIS | GNEISSOSITY OR GNEISSIC FOLIATION | |
| INCLUDED ———— | INCLUDED ———— | |
| VERTICAL ———— | VERTICAL ———— | |

