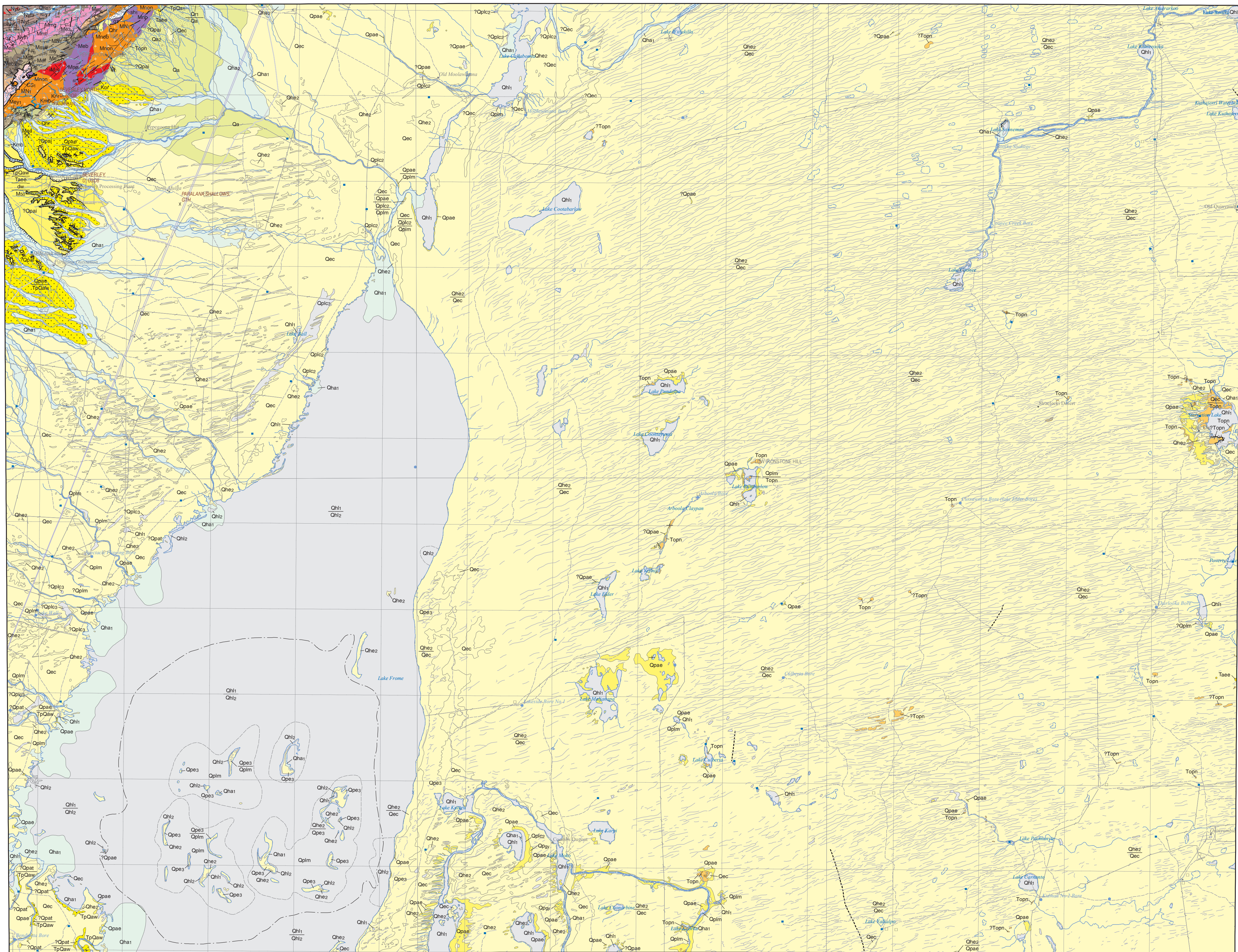


# FROME

GEOLOGICAL SURVEY OF SOUTH AUSTRALIA  
DEPARTMENT FOR ENERGY AND MINING

SA GEOLOGICAL ATLAS SERIES SHEET SH5410

AUSTRALIA 1:250 000



## REFERENCE

HOLOCENE		NEOPROTEROZOIC	
Qh1	HOLOCENE ALLUVIAL/FLUVIAL UNIT 1: Present day Holocene alluvium; current bedrock	Np1	BOLLA BOLLA TELLITE: Tuffe, massive breccia (little with high breccia content), grey to grey-green matrix, minor quartzite and laminated shales.
Qh2	HOLOCENE ALLUVIAL/FLUVIAL UNIT 2: Holocene alluvium slightly older than present day alluvium (Qh1); commonly in terraces adjacent to main channel.	Np2	BOLLA BOLLA TELLITE UNIT 1: Silstones, quartzite, often amphibolite.
Qh3	HOLOCENE ALLUVIAL/FLUVIAL UNIT 3: Holocene floodplain sediments.	Np3	FITTON FORMATION: Conglomerate, arkose, pebbly quartzite, white, massive, interbedded with clay shales.
Qh4	HOLOCENE ALLUVIAL/FLUVIAL UNIT 4: Holocene distal alluvial fan sediments with silt.	Np4	FITTON FORMATION UNIT 2: Quartzite and para-amphibolite.
Qh5	HOLOCENE AECIAN SEDIMENTS: Undifferentiated Holocene aeolian sediments.	Np5	FITTON FORMATION UNIT 3: Arkose.
Qh6	HOLOCENE AECIAN UNIT 2: Holocene sand capping dunes in dunefields.	Np6	HAMILTON CREEK MEMBER: Grey to olive laminated silt mudstone, green to black sandy conglomerate (clasts mainly granitic), sandstone, granules to boulder sized conglomerate (clasts mainly granitic), sandstone, granules with abundant granitic clasts.
Qh7	HOLOCENE AECIAN UNIT 8: Holocene quartz sand dunes and spreads; locally derived from Cretaceous to Quaternary sandy rocks and alluvium.	MESO-NEOPROTEROZOIC	
Qh8	HOLOCENE LACUSTRINE/PLAYA SEDIMENTS: Undifferentiated Holocene lacustrine/salineplaya sediments.	Mn1	MESOPROTEROZOIC-NEOPROTEROZOIC UNIT 1: Meta-mafic rocks: basalt, diorite, gabbro, rare anorthite, all amphibolite to south-chlorite-actinolite. Dykes, silt, pools, plugs. Intrude Mount Babbage line and Mount Painter line.
Qh9	HOLOCENE LACUSTRINE/PLAYA UNIT 1: Holocene playa sediments.	MESOPROTEROZOIC	
Qh10	HOLOCENE LACUSTRINE/PLAYA UNIT 2: Holocene playa margin/beach sediments.	Mn2	GOLDEN POLE GRANITE: Granite, brick red, xenolith and boulders. Core to fine-grained granite.
Qh11	HOLOCENE LACUSTRINE/PLAYA UNIT 3: Holocene playa margin/beach sediments.	Mn3	TERRAPINNA GRANITE: Granite, grey, oval K feldspar megacrysts.
Qh12	HOLOCENE REGOLITH/COLLUVIAL SEDIMENTS: Undifferentiated Holocene colluvial/regolith sediments.	Mn4	WATTLEBONE GRANITE: Granite, grey-white, leucocratic, weakly granitic.
Qh13	HOLOCENE REGOLITH/COLLUVIAL SEDIMENTS: Undifferentiated Holocene colluvial/regolith sediments.	Mn5	MOUNT NEILL GRANITE: Granite, undeformed, brick red to pink, medium to coarse-grained, microcrystalline, with massive to fine-grained equivalents. 1580-1590Ma. A-type.
Qh14	HOLOCENE REGOLITH/COLLUVIAL SEDIMENTS: Undifferentiated Holocene colluvial/regolith sediments.	Mn6	BOX BONE GRANITE: Granite, coarse-grained, alkaline, potassic and biotite. With fluorite and alluvial accessory minerals. A-type.
Qh15	HOLOCENE REGOLITH/COLLUVIAL UNIT 1: Quaternary glacial-moraine column. Based on G on MURDOCCUPPE.	Mn7	PERSEPHONE PORPHYRY: Felsic porphyry, dark green, common flow banding, with embayment or cordoned microcline, white and quartz phenocrysts. 1580-1582 Ma.
Qh16	HOLOCENE REGOLITH/COLLUVIAL UNIT 2: Quaternary high angle alluvial fan sediments.	Mn8	MESOPROTEROZOIC UNIT 14: Porphyry, high-level intrusion.
Qh17	HOLOCENE REGOLITH/COLLUVIAL UNIT 3: Quaternary clay-pellet unit.	Mn9	MESOPROTEROZOIC UNIT 13: Undifferentiated granite, andesite, diorite.
Qh18	HOLOCENE REGOLITH/COLLUVIAL UNIT 4: Quaternary clay-pellet unit.	Mn10	MESOPROTEROZOIC UNIT 29: Microgranite, dark grey, microcrystalline, with embedded or concordant microcline, white and quartz phenocrysts. 1580-1582 Ma.
Qh19	HOLOCENE REGOLITH/COLLUVIAL UNIT 5: Quaternary clay-pellet unit.	Mn11	MESOPROTEROZOIC UNIT 50: Undifferentiated Mesoproterozoic sediments and granites of Mount Painter series, deeply weathered and brecciated.
Qh20	HOLOCENE REGOLITH/COLLUVIAL UNIT 6: Quaternary clay-pellet unit.	Mn12	RADUM CREEK GROUP: Metasediments, quartzite, schist, gneiss, phyllite, calc-silicate rock, medium to coarse-grained. 1550-1555Ma.
Qh21	HOLOCENE REGOLITH/COLLUVIAL UNIT 7: Quaternary clay-pellet unit.	Mn13	MOUNT ADAM QUARTZITE: Quartzite, minor schist, schistose xenocrysts, calc-silicate rock, medium to coarse-grained. 1550-1555Ma.
Qh22	HOLOCENE REGOLITH/COLLUVIAL UNIT 8: Quaternary clay-pellet unit.	Mn14	FREELING HEIGHTS QUARTZITE: Sandstone, medium to coarse-grained, calc-silicate rock, medium to coarse-grained. 1550-1555Ma.
Qh23	HOLOCENE REGOLITH/COLLUVIAL UNIT 9: Quaternary clay-pellet unit.	Mn15	FREELING HEIGHTS QUARTZITE UNIT 1: Quartzite-pelite conglomerate, interbedded.
Qh24	HOLOCENE REGOLITH/COLLUVIAL UNIT 10: Quaternary clay-pellet unit.	Mn16	YAGDUL PHYLITE: Phyllite, schist.
Qh25	HOLOCENE REGOLITH/COLLUVIAL UNIT 11: Quaternary clay-pellet unit.	Mn17	YAGDUL PHYLITE UNIT 1: Phyllite, hornfelsed due to intrusion of Mt Neill Granite.
Qh26	HOLOCENE REGOLITH/COLLUVIAL UNIT 12: Quaternary clay-pellet unit.	Mn18	BRINDANA SCHIST: Schist, sandy, muscovite and biotite schists; garnetiferous schist, amphibolite, hornfels, quartzite.
Qh27	HOLOCENE REGOLITH/COLLUVIAL UNIT 13: Quaternary clay-pellet unit.	Mn19	BRINDANA SCHIST UNIT 2: Psammite, coarse-grained, micaceous, greenish-grey (Chert), well-sorted heavy mineral cross-bedding.
Qh28	HOLOCENE REGOLITH/COLLUVIAL UNIT 14: Quaternary clay-pellet unit.	Mn20	RADUM CREEK GROUP UNIT 3: Schist, quartz-feldspar-mica.
Qh29	HOLOCENE REGOLITH/COLLUVIAL UNIT 15: Quaternary clay-pellet unit.	Mn21	RADUM CREEK GROUP UNIT 5: Orthogneiss, in a gneiss, schist, psammite, sandstone, meta-quartzite, sandstone, xenolith, minor psammite sandstone, orthogneiss. Rare heavy mineral banding, local folding. Mac. dep. age 1551-1554Ma. 1550-1554Ma (U-Pb SHRIMP).
Qh30	HOLOCENE REGOLITH/COLLUVIAL UNIT 16: Quaternary clay-pellet unit.	MISCELLANEOUS	
Qh31	HOLOCENE REGOLITH/COLLUVIAL UNIT 17: Quaternary clay-pellet unit.	Br	BRECCIA: Breccia, undifferentiated.
Qh32	HOLOCENE REGOLITH/COLLUVIAL UNIT 18: Quaternary clay-pellet unit.	DW	DEEP WEATHERING: Deep weathering, undifferentiated.
Qh33	HOLOCENE REGOLITH/COLLUVIAL UNIT 19: Quaternary clay-pellet unit.	MN	MYONITE: Mylonitised rocks, undifferentiated.
Qh34	HOLOCENE REGOLITH/COLLUVIAL UNIT 20: Quaternary clay-pellet unit.	PG	PEGMATITE: Pegmatite, undifferentiated.
Qh35	HOLOCENE REGOLITH/COLLUVIAL UNIT 21: Quaternary clay-pellet unit.	QV	QUARTZ VEIN: Quartz veins/boulders, undifferentiated.
Qh36	HOLOCENE REGOLITH/COLLUVIAL UNIT 22: Quaternary clay-pellet unit.	SR	SHEARED ROCKS: Sheared rocks/shearing, undifferentiated.
Qh37	HOLOCENE REGOLITH/COLLUVIAL UNIT 23: Quaternary clay-pellet unit.	SR	SHEARED ROCKS UNIT 1: Tectonic schist, mylonite and minor breccia. Paranaite Fault-Shear Zone. Mesoproterozoic, Paranaite 1100-1000.
Qh38	HOLOCENE REGOLITH/COLLUVIAL UNIT 24: Quaternary clay-pellet unit.		
Qh39	HOLOCENE REGOLITH/COLLUVIAL UNIT 25: Quaternary clay-pellet unit.		
Qh40	HOLOCENE REGOLITH/COLLUVIAL UNIT 26: Quaternary clay-pellet unit.		
Qh41	HOLOCENE REGOLITH/COLLUVIAL UNIT 27: Quaternary clay-pellet unit.		
Qh42	HOLOCENE REGOLITH/COLLUVIAL UNIT 28: Quaternary clay-pellet unit.		
Qh43	HOLOCENE REGOLITH/COLLUVIAL UNIT 29: Quaternary clay-pellet unit.		
Qh44	HOLOCENE REGOLITH/COLLUVIAL UNIT 30: Quaternary clay-pellet unit.		
Qh45	HOLOCENE REGOLITH/COLLUVIAL UNIT 31: Quaternary clay-pellet unit.		
Qh46	HOLOCENE REGOLITH/COLLUVIAL UNIT 32: Quaternary clay-pellet unit.		
Qh47	HOLOCENE REGOLITH/COLLUVIAL UNIT 33: Quaternary clay-pellet unit.		
Qh48	HOLOCENE REGOLITH/COLLUVIAL UNIT 34: Quaternary clay-pellet unit.		
Qh49	HOLOCENE REGOLITH/COLLUVIAL UNIT 35: Quaternary clay-pellet unit.		
Qh50	HOLOCENE REGOLITH/COLLUVIAL UNIT 36: Quaternary clay-pellet unit.		
Qh51	HOLOCENE REGOLITH/COLLUVIAL UNIT 37: Quaternary clay-pellet unit.		
Qh52	HOLOCENE REGOLITH/COLLUVIAL UNIT 38: Quaternary clay-pellet unit.		
Qh53	HOLOCENE REGOLITH/COLLUVIAL UNIT 39: Quaternary clay-pellet unit.		
Qh54	HOLOCENE REGOLITH/COLLUVIAL UNIT 40: Quaternary clay-pellet unit.		
Qh55	HOLOCENE REGOLITH/COLLUVIAL UNIT 41: Quaternary clay-pellet unit.		
Qh56	HOLOCENE REGOLITH/COLLUVIAL UNIT 42: Quaternary clay-pellet unit.		
Qh57	HOLOCENE REGOLITH/COLLUVIAL UNIT 43: Quaternary clay-pellet unit.		
Qh58	HOLOCENE REGOLITH/COLLUVIAL UNIT 44: Quaternary clay-pellet unit.		
Qh59	HOLOCENE REGOLITH/COLLUVIAL UNIT 45: Quaternary clay-pellet unit.		
Qh60	HOLOCENE REGOLITH/COLLUVIAL UNIT 46: Quaternary clay-pellet unit.		
Qh61	HOLOCENE REGOLITH/COLLUVIAL UNIT 47: Quaternary clay-pellet unit.		
Qh62	HOLOCENE REGOLITH/COLLUVIAL UNIT 48: Quaternary clay-pellet unit.		
Qh63	HOLOCENE REGOLITH/COLLUVIAL UNIT 49: Quaternary clay-pellet unit.		
Qh64	HOLOCENE REGOLITH/COLLUVIAL UNIT 50: Quaternary clay-pellet unit.		
Qh65	HOLOCENE REGOLITH/COLLUVIAL UNIT 51: Quaternary clay-pellet unit.		
Qh66	HOLOCENE REGOLITH/COLLUVIAL UNIT 52: Quaternary clay-pellet unit.		
Qh67	HOLOCENE REGOLITH/COLLUVIAL UNIT 53: Quaternary clay-pellet unit.		
Qh68	HOLOCENE REGOLITH/COLLUVIAL UNIT 54: Quaternary clay-pellet unit.		
Qh69	HOLOCENE REGOLITH/COLLUVIAL UNIT 55: Quaternary clay-pellet unit.		
Qh70	HOLOCENE REGOLITH/COLLUVIAL UNIT 56: Quaternary clay-pellet unit.		
Qh71	HOLOCENE REGOLITH/COLLUVIAL UNIT 57: Quaternary clay-pellet unit.		
Qh72	HOLOCENE REGOLITH/COLLUVIAL UNIT 58: Quaternary clay-pellet unit.		
Qh73	HOLOCENE REGOLITH/COLLUVIAL UNIT 59: Quaternary clay-pellet unit.		
Qh74	HOLOCENE REGOLITH/COLLUVIAL UNIT 60: Quaternary clay-pellet unit.		
Qh75	HOLOCENE REGOLITH/COLLUVIAL UNIT 61: Quaternary clay-pellet unit.		
Qh76	HOLOCENE REGOLITH/COLLUVIAL UNIT 62: Quaternary clay-pellet unit.		
Qh77	HOLOCENE REGOLITH/COLLUVIAL UNIT 63: Quaternary clay-pellet unit.		
Qh78	HOLOCENE REGOLITH/COLLUVIAL UNIT 64: Quaternary clay-pellet unit.		
Qh79	HOLOCENE REGOLITH/COLLUVIAL UNIT 65: Quaternary clay-pellet unit.		
Qh80	HOLOCENE REGOLITH/COLLUVIAL UNIT 66: Quaternary clay-pellet unit.		
Qh81	HOLOCENE REGOLITH/COLLUVIAL UNIT 67: Quaternary clay-pellet unit.		
Qh82	HOLOCENE REGOLITH/COLLUVIAL UNIT 68: Quaternary clay-pellet unit.		
Qh83	HOLOCENE REGOLITH/COLLUVIAL UNIT 69: Quaternary clay-pellet unit.		
Qh84	HOLOCENE REGOLITH/COLLUVIAL UNIT 70: Quaternary clay-pellet unit.		
Qh85	HOLOCENE REGOLITH/COLLUVIAL UNIT 71: Quaternary clay-pellet unit.		
Qh86	HOLOCENE REGOLITH/COLLUVIAL UNIT 72: Quaternary clay-pellet unit.		
Qh87	HOLOCENE REGOLITH/COLLUVIAL UNIT 73: Quaternary clay-pellet unit.		
Qh88	HOLOCENE REGOLITH/COLLUVIAL UNIT 74: Quaternary clay-pellet unit.		
Qh89	HOLOCENE REGOLITH/COLLUVIAL UNIT 75: Quaternary clay-pellet unit.		
Qh90	HOLOCENE REGOLITH/COLLUVIAL UNIT 76: Quaternary clay-pellet unit.		
Qh91	HOLOCENE REGOLITH/COLLUVIAL UNIT 77: Quaternary clay-pellet unit.		
Qh92	HOLOCENE REGOLITH/COLLUVIAL UNIT 78: Quaternary clay-pellet unit.		
Qh93	HOLOCENE REGOLITH/COLLUVIAL UNIT 79: Quaternary clay-pellet unit.		
Qh94	HOLOCENE REGOLITH/COLLUVIAL UNIT 80: Quaternary clay-pellet unit.		
Qh95	HOLOCENE REGOLITH/COLLUVIAL UNIT 81: Quaternary clay-pellet unit.		
Qh96	HOLOCENE REGOLITH/COLLUVIAL UNIT 82: Quaternary clay-pellet unit.		
Qh97	HOLOCENE REGOLITH/COLLUVIAL UNIT 83: Quaternary clay-pellet unit.		
Qh98	HOLOCENE REGOLITH/COLLUVIAL UNIT 84: Quaternary clay-pellet unit.		
Qh99	HOLOCENE REGOLITH/COLLUVIAL UNIT 85: Quaternary clay-pellet unit.		
Qh100	HOLOCENE REGOLITH/COLLUVIAL UNIT 86: Quaternary clay-pellet unit.		
Qh101	HOLOCENE REGOLITH/COLLUVIAL UNIT 87: Quaternary clay-pellet unit.		
Qh102	HOLOCENE REGOLITH/COLLUVIAL UNIT 88: Quaternary clay-pellet unit.		
Qh103	HOLOCENE REGOLITH/COLLUVIAL UNIT 89: Quaternary clay-pellet unit.		
Qh104	HOLOCENE REGOLITH/COLLUVIAL UNIT 90: Quaternary clay-pellet unit.		
Qh105	HOLOCENE REGOLITH/COLLUVIAL UNIT 91: Quaternary clay-pellet unit.		
Qh106	HOLOCENE REGOLITH/COLLUVIAL UNIT 92: Quaternary clay-pellet unit.		
Qh107	HOLOCENE REGOLITH/COLLUVIAL UNIT 93: Quaternary clay-pellet unit.		
Qh108	HOLOCENE REGOLITH/COLLUVIAL UNIT 94: Quaternary clay-pellet unit.		
Qh109	HOLOCENE REGOLITH/COLLUVIAL UNIT 95: Quaternary clay-pellet unit.		
Qh110	HOLOCENE REGOLITH/COLLUVIAL UNIT 96: Quaternary clay-pellet unit.		
Qh111	HOLOCENE REGOLITH/COLLUVIAL UNIT 97: Quaternary clay-pellet unit.		
Qh112	HOLOCENE REGOLITH/COLLUVIAL UNIT 98: Quaternary clay-pellet unit.		
Qh113	HOLOCENE REGOLITH/COLLUVIAL UNIT 99: Quaternary clay-pellet unit.		
Qh114	HOLOCENE REGOLITH/COLLUVIAL UNIT 100: Quaternary clay-pellet unit.		
Qh115	HOLOCENE REGOLITH/COLLUVIAL UNIT 101: Quaternary clay-pellet unit.		
Qh116	HOLOCENE REGOLITH/COLLUVIAL UNIT 102: Quaternary clay-pellet unit.		
Qh117	HOLOCENE REGOLITH/COLLUVIAL UNIT 103: Quaternary clay-pellet unit.		
Qh118	HOLOCENE REGOLITH/COLLUVIAL UNIT 104: Quaternary clay-pellet unit.		
Qh119	HOLOCENE REGOLITH/COLLUVIAL UNIT 105: Quaternary clay-pellet unit.		
Qh120	HOLOCENE REGOLITH/COLLUVIAL UNIT 106: Quaternary clay-pellet unit.		
Qh121	HOLOCENE REGOLITH/COLLUVIAL UNIT 107: Quaternary clay-pellet unit.		
Qh122	HOLOCENE REGOLITH/COLLUVIAL UNIT 108: Quaternary clay-pellet unit.		
Qh123	HOLOCENE REGOLITH/COLLUVIAL UNIT 109: Quaternary clay-pellet unit.		
Qh124	HOLOCENE REGOLITH/COLLUVIAL UNIT 110: Quaternary clay-pellet unit.		
Qh125	HOLOCENE REGOLITH/COLLUVIAL UNIT 111: Quaternary clay-pellet unit.		
Qh126	HOLOCENE REGOLITH/COLLUVIAL UNIT 112: Quaternary clay-pellet unit.		
Qh127	HOLOCENE REGOLITH/COLLUVIAL UNIT 113: Quaternary clay-pellet unit.		
Qh128	HOLOCENE REGOLITH/COLLUVIAL UNIT 114: Quaternary clay-pellet unit.		
Qh129	HOLOCENE REGOLITH/COLLUVIAL UNIT 115: Quaternary clay-pellet unit.		
Qh130	HOLOCENE REGOLITH/COLLUVIAL UNIT 116: Quaternary clay-pellet unit.		
Qh131	HOLOCENE REGOLITH/COLLUVIAL UNIT 117: Quaternary clay-pellet unit.		
Qh132	HOLOCENE REGOLITH/COLLUVIAL UNIT 118: Quaternary clay-pellet unit.		
Qh133	HOLOCENE REGOLITH/COLLUVIAL UNIT 119: Quaternary clay-pellet unit.		
Qh134	HOLOCENE REGOLITH/COLLUVIAL UNIT 120: Quaternary clay-pellet unit.		
Qh135	HOLOCENE REGOLITH/COLLUVIAL UNIT 121: Quaternary clay-pellet unit.		
Qh136	HOLOCENE REGOLITH/COLLUVIAL UNIT 122: Quaternary clay-pellet unit.		
Qh137	HOLOCENE REGOLITH/COLLUVIAL UNIT 123: Quaternary clay-pellet unit.		
Qh138	HOLOCENE REGOLITH/COLLUVIAL UNIT 124: Quaternary clay-pellet unit.		
Qh139	HOLOCENE REGOLITH/COLLUVIAL UNIT 125: Quaternary clay-pellet unit.		
Qh140	HOLOCENE REGOLITH/COLLUVIAL UNIT 126: Quaternary clay-pellet unit.		
Qh141	HOLOCENE REGOLITH/COLLUVIAL UNIT 127: Quaternary clay-pellet unit.		
Qh142	HOLOCENE REGOLITH/COLLUVIAL UNIT 128: Quaternary clay-pellet unit.		
Qh143	HOLOCENE REGOLITH/COLLUVIAL UNIT 129: Quaternary clay-pellet unit.		
Qh144	HOLOCENE REGOLITH/COLLUVIAL UNIT 130: Quaternary clay-pellet unit.		
Qh145	HOLOCENE REGOLITH/COLLUVIAL UNIT 131: Quaternary clay-pellet unit.		
Qh146	HOLOCENE REGOLITH/COLLUVIAL UNIT 132: Quaternary clay-pellet unit.		
Qh147	HOLOCENE REGOLITH/COLLUVIAL UNIT 133: Quaternary clay-pellet unit.		
Qh148	HOLOCENE REGOLITH/COLLUVIAL UNIT 134: Quaternary clay-pellet unit.		
Qh149	HOLOCENE REGOLITH/COLLUVIAL UNIT 135: Quaternary clay-pellet unit.		
Qh150	HOLOCENE REGOLITH/COLLUVIAL UNIT 136: Quaternary clay-pellet unit.		
Qh151	HOLOCENE REGOLITH/COLLUVIAL UNIT 137: Quaternary clay-pellet unit.		
Qh152	HOLOCENE REGOLITH/COLLUVIAL UNIT 138: Quaternary clay-pellet unit.		
Qh153	HOLOCENE REGOLITH/COLLUVIAL UNIT 139: Quaternary clay-pellet unit.		
Qh154	HOLOCENE REGOLITH/COLLUVIAL UNIT 140: Quaternary clay-pellet unit.		
Qh155	HOLOCENE REGOLITH/COLLUVIAL UNIT 141: Quaternary clay-pellet unit.		
Qh156	HOLOCENE REGOLITH/COLLUVIAL UNIT 142: Quaternary clay-pellet unit.		
Qh157	HOLOCENE REGOLITH/COLLUVIAL UNIT 143: Quaternary clay-pellet unit.		
Qh158	HOLOCENE REGOLITH/COLLUVIAL UNIT 144: Quaternary clay-pellet unit.		
Qh159	HOLOCENE REGOLITH/COLLUVIAL UNIT 145: Quaternary clay-pellet unit.		
Qh160	HOLOCENE REGOLITH/COLLUVIAL UNIT 146: Quaternary clay-pellet unit.		
Qh161	HOLOCENE REGOLITH/COLLUVIAL UNIT 147: Quaternary clay-pellet unit.		
Qh162	HOLOCENE REGOLITH/COLLUVIAL UNIT 148: Quaternary clay-pellet unit.		
Qh163	HOLOCENE REGOLITH/COLLUVIAL UNIT 149: Quaternary clay-pellet unit.		
Qh164	HOLOCENE REGOLITH/COLLUVIAL UNIT 150: Quaternary clay-pellet unit.		
Qh165	HOLOCENE REGOLITH/COLLUVIAL UNIT 151: Quaternary clay-pellet unit.		
Qh166	HOLOCENE REGOLITH/COLLUVIAL UNIT 152: Quaternary clay-pellet unit.		
Qh167	HOLOCENE REGOLITH/COLLUVIAL UNIT 153: Quaternary clay-pellet unit.		
Qh168	HOLOCENE REGOLITH/COLLUVIAL UNIT 154: Quaternary clay-pellet unit.		
Qh169	HOLOCENE REGOLITH/COLLUVIAL UNIT 155: Quaternary clay-pellet unit.		
Qh170	HOLOCENE REGOLITH/COLLUVIAL UNIT 156: Quaternary clay-pellet unit.		
Qh171	HOLOCENE REGOLITH/COLLUVIAL UNIT 157: Quaternary clay-pellet unit.		
Qh172	HOLOCENE REGOLITH/COLLUVIAL UNIT 158: Quaternary clay-pellet unit.		
Qh173	HOLOCENE REGOLITH/COLLUVIAL UNIT 159: Quaternary clay-pellet unit.		
Qh174	HOLOCENE REGOLITH/COLLUVIAL UNIT 160: Quaternary clay-pellet unit.		
Qh175	HOLOCENE REGOLITH/COLLUVIAL UNIT 161: Quaternary clay-pellet unit.		
Qh176	HOLOCENE REGOLITH/COLLUVIAL UNIT 162: Quaternary clay-pellet unit.		
Qh177	HOLOCENE REGOLITH/COLLUVIAL UNIT 163: Quaternary clay-pellet unit.		
Qh178	HOLOCENE REGOLITH/COLLUVIAL UNIT 164: Quaternary clay-pellet unit.		
Qh179	HOLOCENE REGOLITH/COLLUVIAL UNIT 165: Quaternary clay-pellet unit.		
Qh180	HOLOCENE REGOLITH/COLLUVIAL UNIT 166: Quaternary clay-pellet unit.		
Qh181	HOLOCENE REGOLITH/COLLUVIAL UNIT 167: Quaternary clay-pellet unit.		
Qh182	HOLOCENE REGOLITH/COLLUVIAL UNIT 168: Quaternary clay-pellet unit.		
Qh183	HOLOCENE REGOLITH/COLLUVIAL UNIT 169: Quaternary clay-pellet unit.		
Qh184	HOLOCENE REGOLITH/COLLUVIAL UNIT 170: Quaternary clay-pellet unit.		
Qh185	HOLOCENE REGOLITH/COLLUVIAL UNIT 171: Quaternary clay-pellet unit.		
Qh186	HOLOCENE REGOLITH/COLLUVIAL UNIT 172: Quaternary clay-pellet unit.		
Qh187	HOLOCENE REGOLITH/COLLUVIAL UNIT 173: Quaternary clay-pellet unit.		
Qh188	HOLOCENE REGOLITH/COLLUVIAL UNIT 174: Quaternary clay-pellet unit.		
Qh189	HOLOCENE REGOLITH/COLLUVIAL UNIT 175: Quaternary clay-pellet unit.		
Qh190	HOLOCENE REGOLITH/COLLUVIAL UNIT 176: Quaternary clay-pellet unit.		
Qh191	HOLOCENE REGOLITH/COLLUVIAL UNIT 177: Quaternary clay-pellet unit.		
Qh192	HOLOCENE REGOLITH/COLLUVIAL UNIT 178: Quaternary clay-pellet unit.		
Qh193	HOLOCENE REGOLITH/COLLUVIAL UNIT 179: Quaternary clay-pellet unit.		
Qh194	HOLOCENE REGOLITH/COLLUVIAL UNIT 180: Quaternary clay-pellet unit.		
Qh195	HOLOCENE REGOLITH/COLLUVIAL UNIT 181: Quaternary clay-pellet unit.		
Qh196	HOLOCENE REGOLITH/COLLUVIAL UNIT 182: Quaternary clay-pellet unit.		
Qh197	HOLOCENE REGOLITH/COLLUVIAL UNIT 183: Quaternary clay-pellet unit.		
Qh198	HOLOCENE REGOLITH/COLLUVIAL UNIT 184: Quaternary clay-pellet unit.		
Qh199	HOLOCENE REGOLITH/COLLUVIAL UNIT 185: Quaternary clay-pellet unit.		
Qh200	HOLOCENE REGOLITH/COLLUVIAL UNIT 186: Quaternary clay-pellet unit.		
Qh201	HOLOCENE REGOLITH/COLLUVIAL UNIT 187: Quaternary clay-pellet unit.		
Qh202	HOLOCENE REGOLITH/COLLUVIAL UNIT 188: Quaternary clay-pellet unit.		
Qh203	HOLOCENE REGOLITH/COLLUVIAL UNIT 189: Quaternary clay-pellet unit.		
Qh204	HOLOCENE REGOLITH/COLLUVIAL UNIT 190: Quaternary clay-pellet unit.		
Qh205	HOLOCENE REGOLITH/COLLUVIAL UNIT 191: Quaternary clay-pellet unit.		
Qh206	HOLOCENE REGOLITH/COLLUVIAL UNIT 192: Quaternary clay-pellet unit.		
Qh207	HOLOCENE REGOLITH/COLLUVIAL UNIT 193: Quaternary clay-pellet unit.		
Qh208	HOLOCENE REGOLITH/COLLUVIAL UNIT 194: Quaternary clay-pellet unit.		
Qh209	HOLOCENE REGOLITH/COLLUVIAL UNIT 195: Quaternary clay-pellet unit.		
Qh210	HOLOCENE REGOLITH/COLLUVIAL UNIT 196: Quaternary clay-pellet unit.		
Qh211	HOLOCENE REGOLITH/COLLUVIAL UNIT 197: Quaternary clay-pellet unit.		
Qh212	HOLOCENE REGOLITH/COLLUVIAL UNIT 198: Quaternary clay-pellet unit.		
Qh213	HOLOCENE REGOLITH/COLLUVIAL UNIT 199: Quaternary clay-pellet unit.		
Qh214	HOLOCENE REGOLITH/COLLUVIAL UNIT 200: Quaternary clay-pellet unit.		
Qh215	HOLOCENE REGOLITH/COLLUVIAL UNIT 201: Quaternary clay-pellet unit.		
Qh216	HOLOCENE REGOLITH/COLLUVIAL UNIT 202: Quaternary clay-pellet unit.		
Qh217	HOLOCENE REGOLITH/COLLUVIAL UNIT 203: Quaternary clay-pellet unit.		
Qh218	HOLOCENE REGOLITH/COLLUVIAL UNIT 204: Quaternary clay-pellet unit.		
Qh219	HOLOCENE REGOLITH/COLLUVIAL UNIT 205: Quaternary clay-pellet unit.		
Qh220	HOLOCENE REGOLITH/COLLUVIAL UNIT 206: Quaternary clay-pellet unit.		
Qh221	HOLOCENE REGOLITH/COLLUVIAL UNIT 207: Quaternary clay-pellet unit.		
Qh222	HOLOCENE REGOLITH/COLLUVIAL UNIT 208: Quaternary clay-pellet unit.		
Qh223	HOLOCENE REGOLITH/COLLUVIAL UNIT 209: Quaternary clay-pellet unit.		