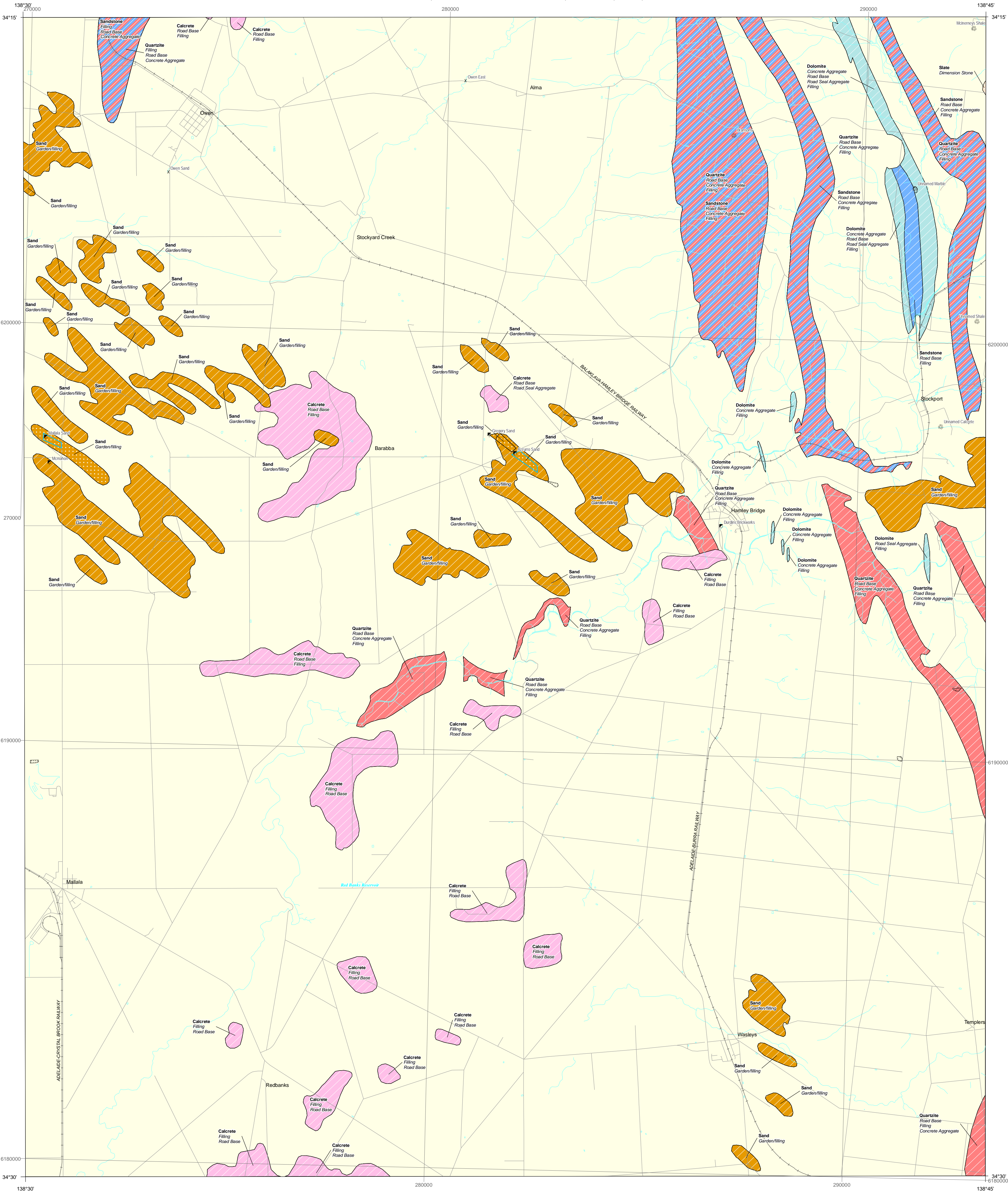


# HAMLEY BRIDGE

## MINERAL RESOURCE POTENTIAL

GEOLOGICAL SURVEY OF SOUTH AUSTRALIA, DEPARTMENT FOR MANUFACTURING, INNOVATION, TRADE, RESOURCES AND ENERGY



### REFERENCE

**MINERAL RESOURCE POTENTIAL**  
South Australian Mineral Resource Potential Mapping translates geological mapping, current productive mineral tenement locations and a range of other resource information into a 3 level categorisation of resource potential and suggested planning response as below.

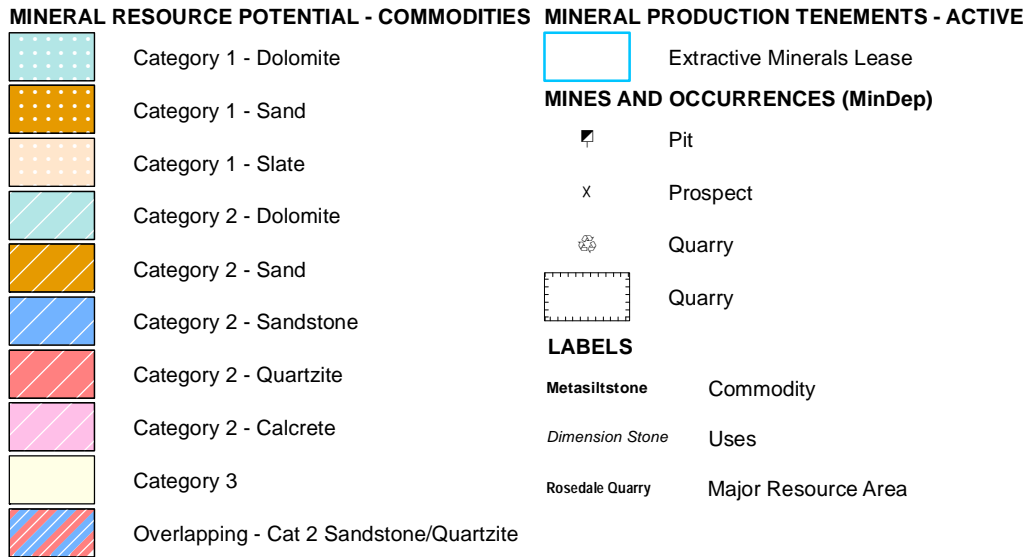
**CATEGORY 1 - HIGH MINERAL POTENTIAL & for Current Operation**  
Full planning protection required from incompatible development. Important mineral resource area. Current mining operation, current mineral tenement, Extractive Industry Zone, known economically viable mineral resource/reserve established by drilling, trenching etc. or high potential for resource/reserve although full investigation to resource/reserve status not yet undertaken.

**CATEGORY 2 - MEDIUM MINERAL POTENTIAL**  
Mineral Potential should be considered in planning. Further consultation or investigation before incompatible development allowed. Moderate to good geological potential for significant resources known from preliminary geological studies but investigation required to establish resource and economic viability.

**CATEGORY 3 - LOW MINERAL POTENTIAL**  
No specific planning protection required. No or very minor known mineral resource potential based on current information. May include some sources of construction material eg fill or other low specification material for local use from pits operated by councils.

Changes in mineral resource market requirements, in geological knowledge and information and in exploration techniques may significantly alter the mineral potential categories applicable to areas. The latter two factors are particularly relevant to the potential for metallic minerals.

South Australian Mineral Resource Potential Mapping is discussed further in MESA Journal 59 : 13-15.

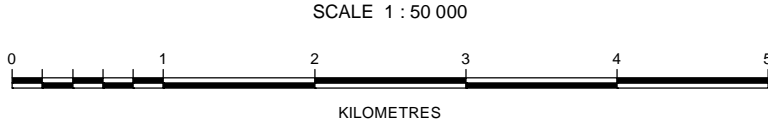


### LOCALITY



### INDEX TO ADJOINING SHEETS

LOCKEY	IRLBY	CLARE	APONGA	WOLFS END	FLORISTON
WAKEFIELD 6529	BAKALAVA	HARBURY	HIVERTON	EUONDA	MOUNT MARY
INKEIRMAN	DUBLIN	HAMLEY BRIDGE 6629	KAPUNDA	TRILBO	SANDLETON
VINCENT	GAWLER	BAROSSA	ANGASTON	CAMBRAI	
	ADELAIDE	ONKAPARRINGA	TEPKO	MANNUM	



Any person purchasing this map may reproduce it for their own use or that of their staff, but not for any other purpose except with the written permission of the Chief Executive,  
Department for Manufacturing, Innovation, Trade, Resources and Energy,  
GPO Box 1264, Adelaide, South Australia, 5001

CROWN COPYRIGHT RESERVED  
Department for Manufacturing, Innovation, Trade, Resources and Energy,  
2014  
Compiled by G. Gordon, J. Talbot, & R.S. Robertson (DMITRE Geological Survey of South Australia).  
Incorporating information from Johnson (1994) - Non Metallic Resources Series Maps and geological mapping from SA Geology database.

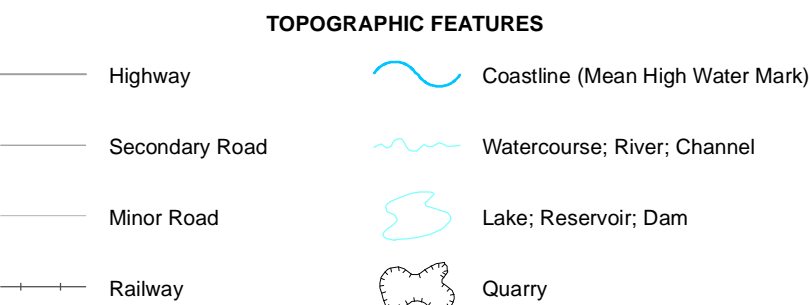
Topographic detail based on information supplied by  
SA Department of Environment and Natural Resources.  
The relationship between this data and DMITRE data is not guaranteed.  
A product of PIRSA Spatial Information Services.

January 09, 2014

**DISCLAIMER**  
This mapping product is designed to assist land use planning and is not suitable for use in mineral resource investment decisions. Many areas categorised as having mineral resource potential do not have sufficient drilling or other information to define resources or reserves to mineral industry (JORC) standards. The mineral resource potential information is largely interpretative in nature and is based on information available at the time of compilation. New information or further interpretation of existing information may significantly change the assessments of mineral resource potential shown on this map.

\*The Joint Ore Reserves Committee of the Australasian Institute of Mining and Metallurgy, Australian Institute of Geoscientists and Minerals Council of Australia. The JORC Code is the Australasian Code for reporting of Exploration Results, Mineral Resources and Ore Reserves

**CURRENCY OF INFORMATION**  
Mineral tenement locations and mineral resource potential information may have changed since production of this map on 9 January 2014.  
Current tenement information is available online through the DMITRE SARIG site at [www.sarig.pir.sa.gov.au](http://www.sarig.pir.sa.gov.au)



HAMLEY BRIDGE  
66293