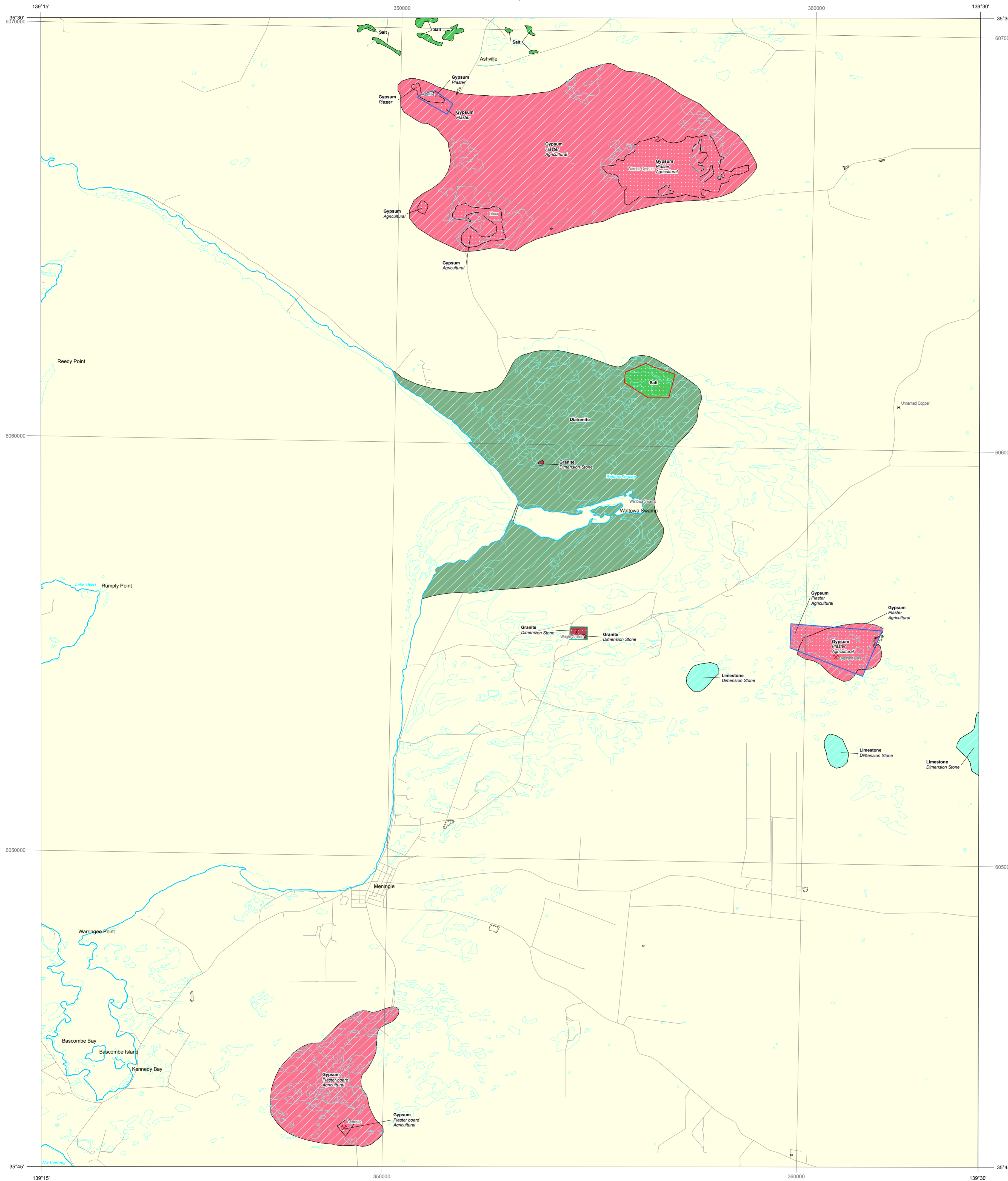


# MENINGIE

## MINERAL RESOURCE POTENTIAL

GEOLOGICAL SURVEY OF SOUTH AUSTRALIA, DEPARTMENT OF STATE DEVELOPMENT



### REFERENCE

**MINERAL RESOURCE POTENTIAL**  
South Australian Mineral Resource Potential Mapping translates geological mapping, current productive mineral tenement locations and a range of other resource information into a 3 level categorisation of resource potential and suggested planning response as below.

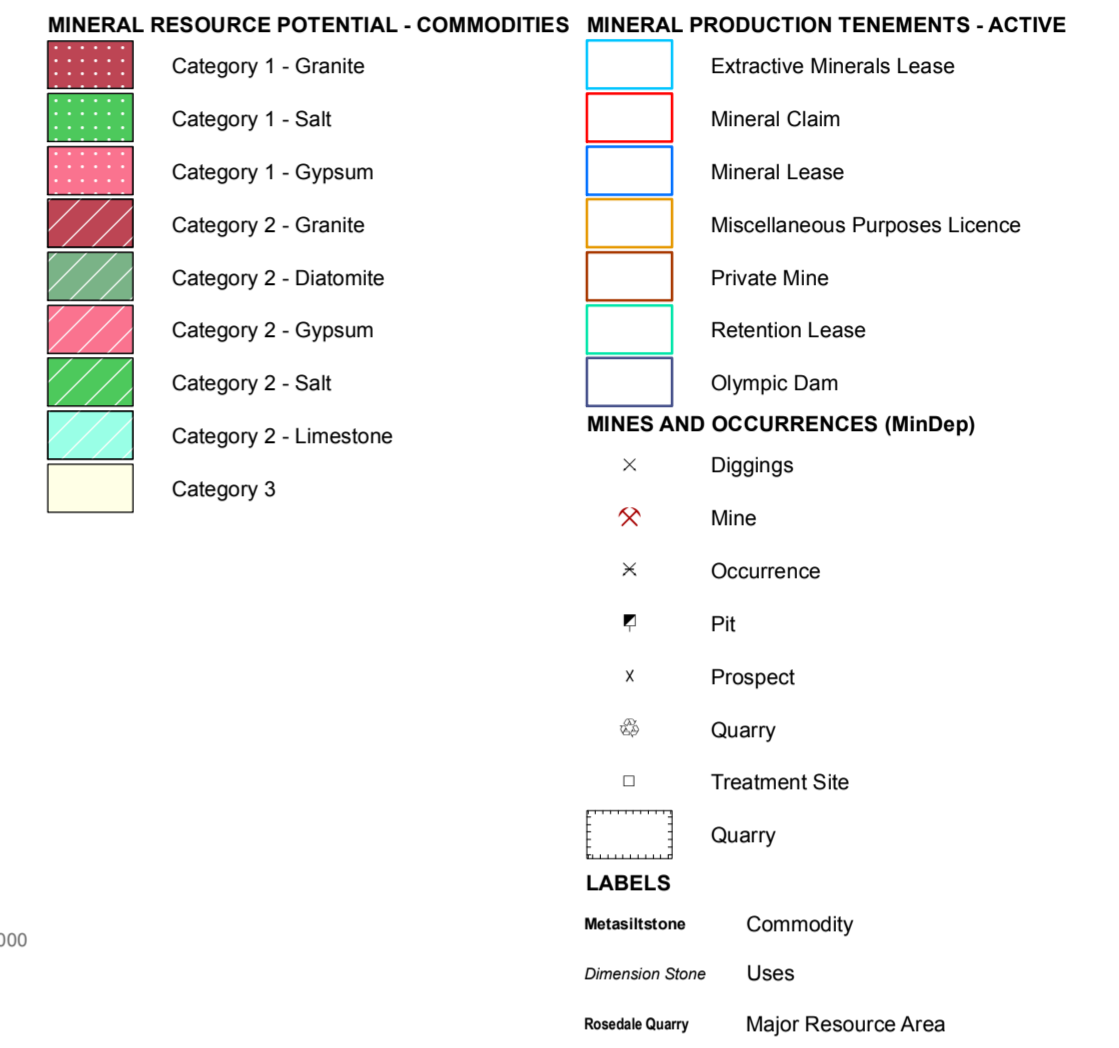
**CATEGORY 1 - HIGH MINERAL POTENTIAL & /or Current Operation**  
Full planning protection required from incompatible development. Important mineral resource area. Current mining operation, current mineral tenement, Extractive Industry Zone, known economically viable mineral resource/reserve established by drilling, trenching etc. or high potential for resource/reserve although full investigation to resource/reserve status not yet undertaken.

**CATEGORY 2 - MEDIUM MINERAL POTENTIAL**  
Mineral Potential should be considered in planning. Further consultation or investigation before incompatible development allowed. Moderate to good geological potential for significant resources known from preliminary geological studies but investigation required to establish resource and economic viability.

**CATEGORY 3 - LOW MINERAL POTENTIAL**  
No specific planning protection required. No or very minor known mineral resource potential based on current information. May include some sources of construction material eg fill or other low specification material for local use from pits operated by councils.

Changes in mineral resource market requirements, in geological knowledge and information and in exploration techniques may significantly alter the mineral potential categories applicable to areas. The latter two factors are particularly relevant to the potential for metallic minerals.

South Australian Mineral Resource Potential Mapping is discussed further in MESA Journal 59 : 13-15.



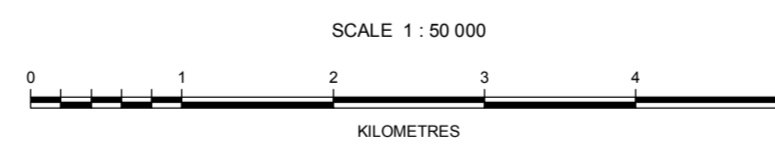
GRID LINES ARE 10 000 METRE INTERVALS OF THE MAP GRID OF AUSTRALIA 1994

### LOCALITY



### INDEX TO ADJOINING SHEETS

AZELADE	ENKAPARANGA	TERKO	MANUMU	CAURNAMONT	BANDON
MARLUNGA	ECHLINGA	MONWITO	MOBLONG	WYWARKA	KARONDGA
Milang 6627	Mobilong 6727	Moorlands 6827			
WILLINGA	MILANG	ALEXANDRINA	WELLINGTON	MOORLANDS	BUCOLEUCH
Encounter 6626	Meningie 6726	Coonalpyn 6826			
ENCOUNTER	COOLWA	NARRUNG	MENINGIE	BIRNIE	COONALPYN
		MAGRATH FLAT	WOODS WELL	CULBURA	
			SAWTO	TAUNTA	



Any person purchasing this map may reproduce it for their own use or that of their staff, but not for any other purpose except with the written permission of the Chief Executive,  
Department of State Development,  
GPO Box 1294, Adelaide, South Australia, 5001

CROWN COPYRIGHT RESERVED  
Department of State Development,  
2015

Compiled by J. Talbot & R.S. Robertson (DSD Geological Survey of South Australia).  
Incorporating information from Johnson (1994) - Non Metallic Resources Series Maps and geological mapping from SA Geology database.

Topographic detail based on information supplied by SA Department of Environment, Water and Natural Resources. The relationship between this data and DSD data is not guaranteed.  
A product of PIRSA Spatial Information Services.

September 24, 2015

**DISCLAIMER**  
This mapping product is designed to assist land use planning and is not suitable for use in mineral resource investment decisions. Many areas categorised as having mineral resource potential do not have sufficient drilling or other information to define resources or reserves to mineral industry (JORC) standards. The mineral resource potential information is largely interpretative in nature and is based on information available at the time of compilation. New information or further interpretation of existing information may significantly change the assessments of mineral resource potential shown on this map.

\*The Joint Ore Reserves Committee of the Australasian Institute of Mining and Metallurgy, Australian Institute of Geoscientists and Mineral Council of Australia. The JORC Code is the Australian Code for reporting of Exploration Results, Mineral Resources and Ore Reserves.

**CURRENCY OF INFORMATION**  
Mineral tenement locations and mineral resource potential information may have changed since production of this map on 24 September 2015.

Current tenement information is available online through the DSD SARIG site at [www.sarig.pir.sa.gov.au](http://www.sarig.pir.sa.gov.au)

### TOPOGRAPHIC FEATURES

